

# SPOTLIGHT ON ESP STEAM SPECIALTIES

A few years back we received a phone call from a customer suggesting a major upgrade to the Steam Specialties module of the ESP-PLUS program. The program at that time was difficult to use because, while it was a Windows program, all the inputs were text based. It was difficult to really know what the program was requesting on complicated systems with split loads and two-stage pressure reductions. The customer emphasized that, in general, steam expertise was declining and a solid selection tool would be very beneficial.

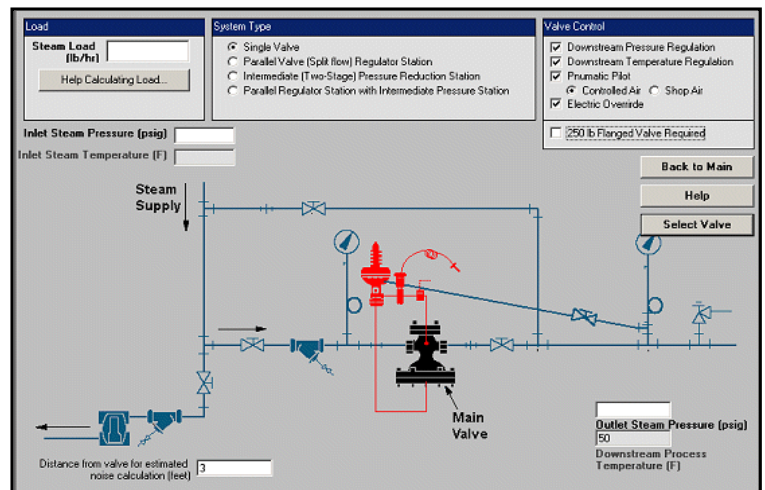


We took the customer's suggestions to heart and did a major overhaul of the application.

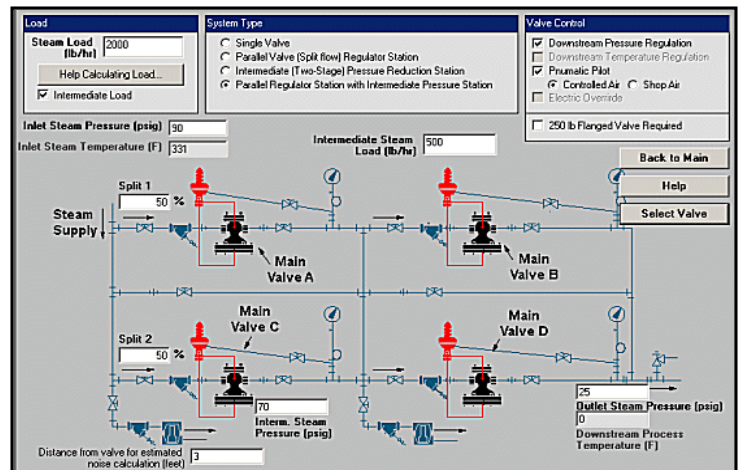
The program was rewritten using system graphics to help guide the user - and was made available as both a stand-alone and web-based application.

In the Seam Regulator module, there are four possible system types to choose. The

type chosen will result in one, two or four valves actually being selected. The system graphic changes depending on the type steam regulator station being examined. In addition to the valve, the user can indicate what controls are required: Temperature, Pressure, and an electronic override. The program will not let a user select a control that doesn't make sense for the type of system that was chosen.



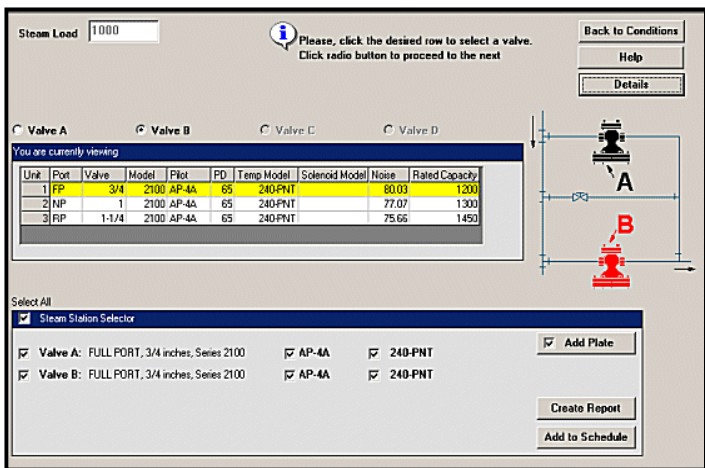
Again, the system graphic changes depending on the type of steam control to help the user better understand the system design. System inputs are placed logically on the system schematic to make it easy for the engineer to understand what is being requested.



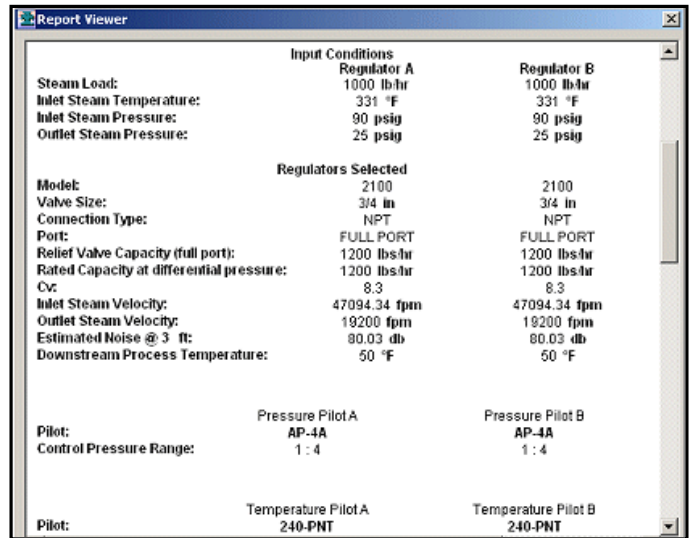
# SPOTLIGHT ON ESP STEAM SPECIALTIES

The program will return a full port, normal port and reduced port option for each valve in the system. Again, a graphic is used to help the engineer understand which of the system valves is being finalized. In addition to the ITT product, the engineer can also select an orifice plate making the program even more useful.

A final report is available that shows the valves selected, the engineering properties, a specification and system sketch. The user also has the ability to save the components to a project schedule that can be sent to an ITT Sales Representative to generate a quotation and submittals. On the website, we offer steam piping schematics to help the engineer/designer complete their plans.



Engineering details are available for each of the valves.



In addition to steam regulator products, an engineer can also accurately select steam traps and temperature regulators for steam and water systems.

In addition to the selection tools, the program includes very valuable engineering calculators for:

- Condensate Pipe Sizing
- Steam Pipe Sizing
- Flash Tank Sizing / Energy Costs
- Energy losses for failed traps

